

Intelligence Surveillance Reconnaissance

ISR is a system that supports decision-making by collecting, monitoring, and surveying critical information.



Use cases



Inspection

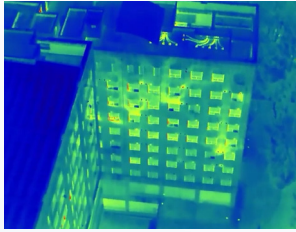


Surveillance



Rescue

Main Function



Capture the Invisible with Precision

Our advanced camera allows seamless synchronization of IR images with normal images, delivering unparalleled clarity and radiometric data support. With R-JPEG compatibility, experience superior imaging quality and detailed analysis.



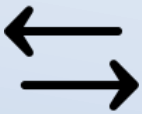
Unleash Superior Vision with Cutting-Edge Technology

Our EO camera features a SONY Exmor R CMOS Sensor, supporting stunning 4K images with an impressive 30x zoom. Equipped with an internal NVIDIA board, it offers advanced object detection capabilities, ensuring precise and versatile performance for all your needs.

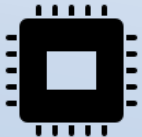
Functions Highlights



- Sensor: SONY 1/2.5 CMOS 8.51 MP
- Resolution: 3840×2160@30fps
- Electronic shutter speed: 1 to 1/10000 sec.



- Wavelength: 905nm (Class 1)
- Measurement Range: 5-1200m (Effective for distances over 12m with a 20% reflection rate)
- Measurement Accuracy: ±1m (6 ~ 60m), ±1.5m(70 ~ 100), ±2m(110 ~ 400m), ±0.4m (> 400m)



- GPU: 384-core NVIDIA Volta™ GPU with 48 Tensor Cores
- CPU: 6-core NVIDIA Carmel ARM®v8.2 64-bit CPU 6MB L2 + 4MB L3
- Memory: 8 GB 128-bit LPDDR4x @ 1600 MHz 51.2GB/s
- Storage: 16 GB eMMC 5.1



Specification

AQUILA-3F

Size	583×582×287mm
Weight (with. camera)	3.6kg
Flight Time (with. camera)	50mins
Battery Capacity	12,000mAh

RHYTHM 3

Size	150×112×153mm
Weight	800g
Camera Nodules	EO: SONY Exmor, 4K, x30 Zoom IR: 640 × 512, 30Hz LRF: distance up to 1.2Km AI Image Detection
Water-Proof	IP44

